

R-TECH[®] PLATINUM

Breathable GPS Insulated Sheathing

R-Tech Platinum is a revolutionary Graphite Polystyrene (GPS) insulation system that combines a factory laminated metallic facer and premium rigid insulation into one wall sheathing product.

Made from Insulfoam's GPS with Neopor®, R-Tech Platinum delivers impressive R-Values. Metallic facers are laminated to both sides of the GPS insulation in a proprietary process, which creates a semi vapor permeable (breathable) shield, to help meet the latest building standards and code requirements for thermal protection as a continuous envelope insulation.

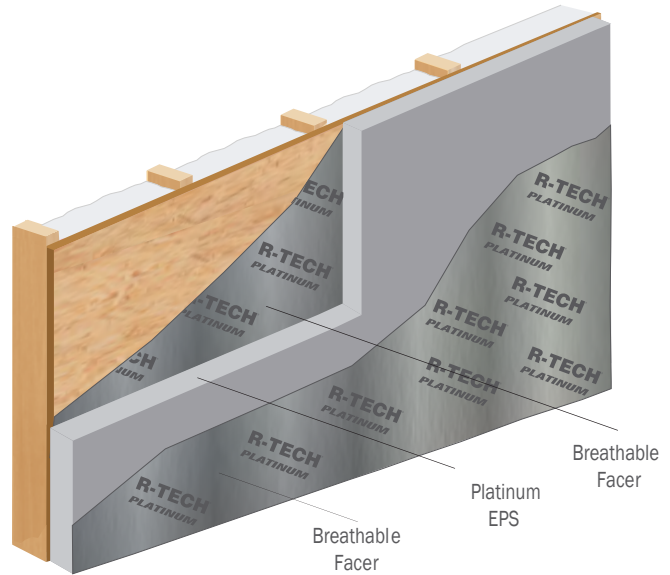
Ideal for residential construction, R-Tech Platinum provides high insulating power at lower thicknesses. It is also more economical compared to other premium rigid insulations, and provides long-term stable R-Value (does not suffer from thermal drift). This proven stability is backed by 20-year thermal warranty for 100% of R-Value.

The Science Behind R-Tech Platinum's R-Values

Insulfoam Platinum GPS products are made with a polymer matrix (Neopor®) containing graphite, which reflects radiant heat energy like a mirror, increasing Platinum insulation's resistance to the flow of heat - also known as R-Value. Insulation's job is to help conserve energy as heat moves from warmer to colder areas. On cold days, heat from inside wants to get outside. On warmer days the heat from outside wants inside. The higher the R-Value the more efficient the insulation is in this process. With higher R-Values, R-Tech Platinum products slow the heat transfer better than other premium rigid insulations.

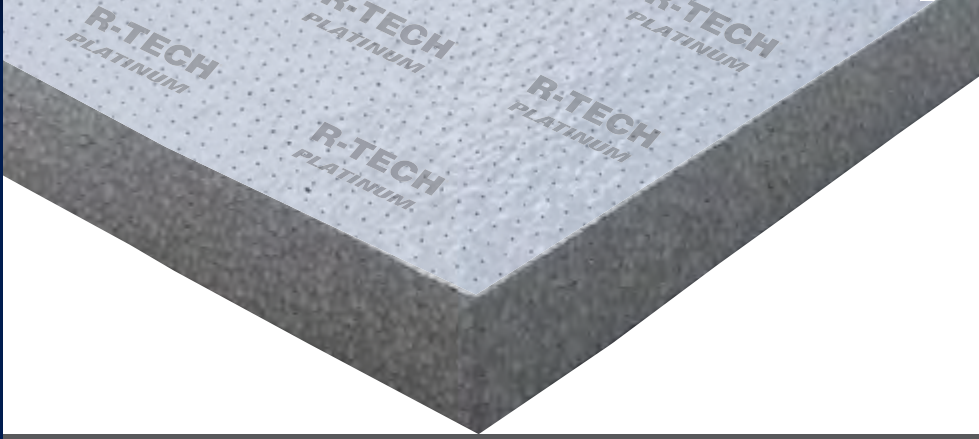
A higher R-Value should cost more, right? Wrong. The graphite polystyrene base is also extremely lightweight and uses less raw material than other premium insulations, so the product is both thinner and lighter (think fast install). GPS itself is naturally virtually immune to moisture effects. R-Tech Platinum, with its built-in breathable facers, demonstrated significantly higher R-Values during ASTM C1363 testing, which determines the total thermal performance of the entire wall assembly and is widely regarded as the real-world measure of a wall's thermal performance.

The cost for all of this? A price point lower than that of other premium rigid insulations. This is one product you'll turn to time and time again.



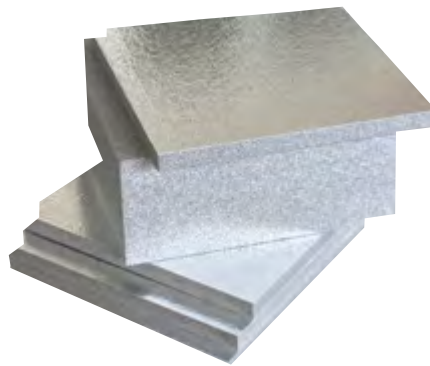
Made For Builders

- R-Tech Platinum covers OSB or wood wall sheathing
- Meets or exceeds ASTM C578 specifications
- Breathable insulation system includes a breathable facer to save an extra step in materials and installation costs
- Proven resilience of Insulfoam's GPS and R-Tech insulation reduces builder insulation related call backs



Proven Performance: As the industry's leader in EPS insulation, Insulfoam has more than 50 years of manufacturing & customer service expertise.

R-TECH[®] PLATINUM



Typical Physical Properties

Property	R-Tech Platinum	R-Tech Platinum X	R-Tech Platinum IV	Test Method
Density (nom. pcf.)	1.00	1.50	2.00	ASTM C518
R-Value/ In.				
@ 25° F	5.1	5.1	5.2	ASTM C518
@ 40° F	4.9	4.9	5.0	or
@ 75° F	4.7	4.7	4.7	ASTM C177
Compressive Strength (psi. 10% deformation)	13 psi	20 psi	28 psi	ASTM D1621
Flexural Strength (min. psi.)	33	50	70	ASTM C203
Water Absorption (max. % by vol.)	<1.0	<1.0	<1.0	ASTM C272

Properties are based on ASTM C518 plate testing and data provided by resin manufacturers' testing.

The Power of Platinum

- Higher R-Value for the same thickness - ideal for space constrained areas
- Ideal for long-term moisture management
- Extremely stable R-Values
- Strongest product warranty
- Significant material cost savings
- Labor installation savings
- Code Compliant: Meets HUD Specifications, UL Laboratories Classified & UL Evaluation Report ER14313-01



R-Tech Platinum Wall Sheathing

Your best choice for a faced, premium insulation in one product.

Engineered for Versatility

- Available in 1" - 5" product thicknesses
- Large 4'x8' or 4'x9' lightweight panels install fast
- Breathable insulated sheathing removes the need for additional materials
- Can help qualify as continuous insulation when seams are taped with Polygard-136 Reflective Tape

Cost-Effective

- 20-30% less material cost over other premium insulations
- Combined breathable facers & insulation are laminated together in one component
- Lightweight insulation lowers shipping costs
- Reduce building operating costs by 20-30% simply by choosing premium insulations like R-Tech Platinum

Environmentally Sustainable

- Do not contain ozone-depleting chemicals
- Non-toxic, inert and 100% recyclable
- Do not support mold or mildew growth for improved indoor air quality (IAQ)
- Insect resistant treatments available
- Insulation is naturally water resistant & does not readily absorb moisture