

R-TECH[®]

INSTALLATION INSTRUCTIONS

The following instructions are provided for the installation of Insulfoam's R-TECH EPS (expanded polystyrene) insulation. These instructions provide guidance and do not cover all aspects related to the installation or use of insulation products in a structure. Ensure that the installation complies with the applicable code requirements such as thermal and ignition barriers.

Reference your local building codes, which may have requirements for insulation, vapor retarders, interior thermal barriers, finish materials, exterior weather-resistive barriers and claddings, ventilation, insulation in adjacent areas, caulking and sealing, among other applications.

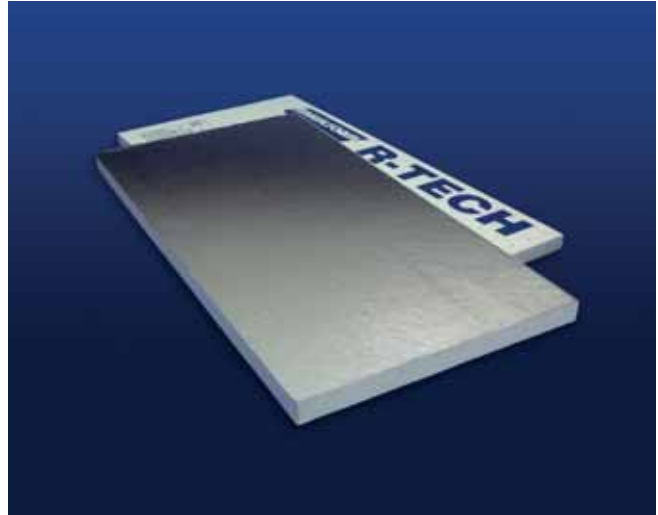
The installation of R-TECH insulation does not require a trained or certified installer. As the installer, you are solely responsible for the proper installation of all materials, following product label instructions and using proper safety precautions during installation. Insulfoam is not responsible for building design and accepts no responsibility for the performance of its products resulting from improper building design, construction faults, or defective installation.

Adhesive and sealant solvents that are detrimental to the performance of R-TECH rigid insulation include, but are not limited to, esters, ketones, ethers, aromatic and aliphatic hydrocarbons and their emulsions. R-TECH insulation is not to be placed in contact with materials of unknown composition (or their vapors). Materials must be pretested for compatibility at maximum exposure temperature.

Do not install or use R-TECH insulation products with coal tar pitch, highly solvent extended mastics, or solvent-based adhesives without adequate separation.

Insulfoam does not guarantee any warranty with respect to suitability of adhesive products. Please check with the adhesive manufacturer to confirm the compatibility of their adhesives/sealants with EPS insulation and specific applications.

R-TECH insulation should not be installed in applications where the temperature exceeds 167°F (75°C). Protect R-TECH insulation from direct contact with hot objects and sources of ignition.



Tools

- Tape measure
- Utility knife
- Straightedge
- Power drill
- Saw
- Hammer
- Nail and/or pneumatic staple gun (minimum 6d ring-shank nails and 15/16"-diameter plastic washer or minimum 1"-wide crown staples)

Protective Gear

- Work gloves
- Loose-fitting, long-sleeved shirt
- OSHA-approved safety glasses
- Disposable dust respirator (NIOSH or MSHA approved)