

# INSULGRADE DB

## RIGID EXTERIOR FOUNDATION INSULATION AND DRAINAGE BOARD

### Description

InsulGrade DB (InsulFoam DB Drainage Board) is a high-performance, rigid insulation consisting of a superior closed-cell, lightweight and resilient expanded polystyrene (EPS) with an advanced filtration facer. The core of InsulGrade DB has ¼" x ¼" drainage channels every 2" O.C. and is the same high-quality as our InsulFoam brand insulations. InsulGrade DB has excellent dimensional stability, compressive strength and drainage capacity properties. In addition, InsulGrade DB is an ENERGY STAR® qualified insulation and qualifies for LEED points.

### Uses

InsulGrade DB is designed to be applied as an exterior foundation insulation and drainage board. InsulGrade DB aids in reducing hydrostatic pressure on the foundation from the adjacent backfill material while protecting the underlying damp proofing or waterproofing.

### Advantages

- **Long-Term Effectiveness.** The InsulGrade DB facer prevents accumulation of the backfill material within the drainage channels unlike some unfaced grooved boards.
- **Added Protection.** InsulGrade DB provides protection to the waterproofing or damp-proofing and to the foundation during backfill installation and from any post-construction soil freeze-thaw cycling and settlement.
- **Stable R-Value.** Customers are well served knowing the product's thermal properties will remain stable over the entire service-life.
- **Cost Effective.** InsulGrade DB is typically less expensive than other below-grade or perimeter insulations.
- **Environmentally Friendly.** It contains no formaldehyde or ozone-depleting CFC's or HCFC's, may contain recycled material and the foam core is 100% recyclable.
- **Proven Performance.** The same fundamental chemistry has been in use since the mid-1950s so the actual performance of the foam core is well known.
- **Water Resistance.** InsulFoam insulations do not readily absorb moisture from the environment.



### Sizes

InsulGrade DB is typically manufactured in 4' x 8' sheets with square edges and is available in any thickness between 1" and 5". Different densities, sizes and thicknesses are available upon request.

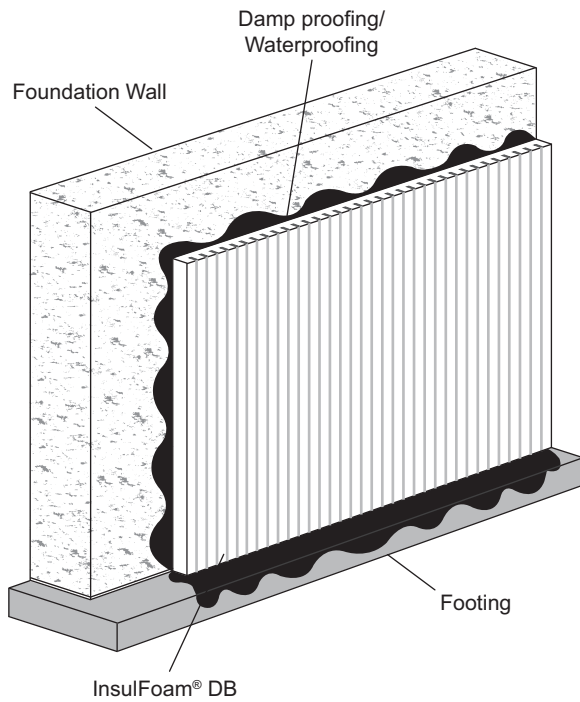
### Installation Recommendations

- Install InsulGrade DB directly over damp-proofing or waterproofing. The InsulGrade DB can be attached with an EPS-compatible adhesive, mechanical fasteners or held in place by the backfill.
- Tightly butt insulation joints to minimize dirt infiltration.
- Seal the top edge of the InsulGrade DB with either caulking or a J-strip to minimize water and mud infiltration.

# INSULGRADE DB

RIGID EXTERIOR FOUNDATION INSULATION AND DRAINAGE BOARD

## Typical Foundation Drainage Application



## Performance Property

Property	Test Method	Value
<b>Drainage Capacity</b> @ 1200 psf, gradient .19	ASTM D4716	5 gal/min/ft