



Description

InsulFoam IEG, is a versatile product consisting of a superior closed-cell, lightweight and resilient expanded polystyrene (EPS). InsulFoam meets or exceeds the requirements of ASTM C578, *Standard Specification for Rigid, Cellular Polystyrene Thermal Insulation*. InsulFoam can be manufactured in a wide range of block and panel sizes, and in a wide assortment of shapes and densities. In addition, InsulFoam offers a long-term, stable R-Value and has excellent dimensional stability, compressive strength and water resistant properties. InsulFoam is an Energy Star® qualified insulation and qualifies for LEED points.

The high thermal value, excellent moisture resistance, dense, easily textured, dimensionally stable, and resistance to physical and environmental abuse makes Insulfoam the leader and preferred exterior insulation used with exterior wall systems.

Uses

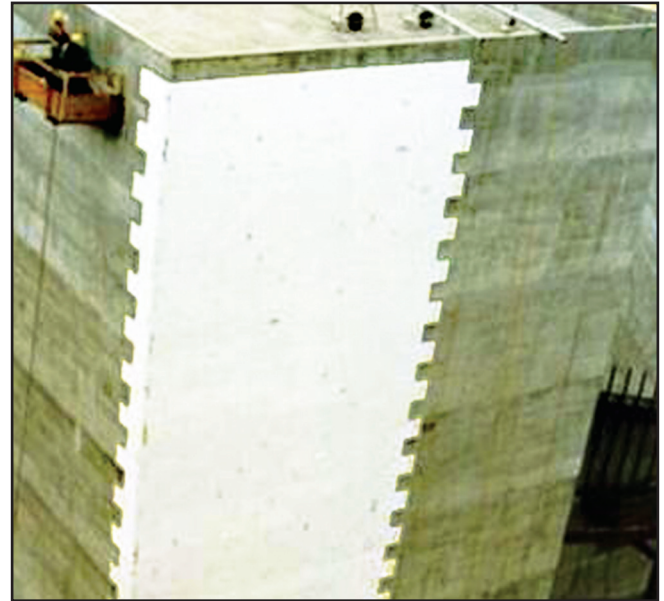
InsulFoam IEG is successfully used in numerous commercial, industrial and residential applications for Exterior Insulation Finishing Systems (EIFS).

Advantages

- **Environmentally Friendly.** InsulFoam contains no dyes, formaldehyde or ozone-depleting HCFCs, and is 100% recyclable.
- **Insect and Mold Resistant.** InsulFoam can be manufactured with an inert additive that deters termites and carpenter ants. InsulFoam does not sustain mold and mildew growth.
- **Stable R-Value.** InsulFoam has no thermal drift. Designers are well served knowing InsulFoam's thermal properties will remain stable over its entire service life. InsulFoam is eligible for an Insulfoam 20-year Thermal Performance Warranty – a warranty that's not prorated or limited to a percentage of the published R-Value.
- **Proven Performance.** The same fundamental EPS chemistry has been in use since the mid-1950s, so the actual performance of the product is well known.
- **Water-Resistant.** InsulFoam does not readily absorb moisture from the environment.
- **Cost-Effective.** InsulFoam is typically less expensive than comparable insulation products.
- **Code Approvals.** InsulFoam is recognized by the International Code Council Evaluation Service (ICC-ES), for numerous applications. Please contact your local Insulfoam representative for details.

Sizes

InsulFoam is offered in an assortment of sizes and shapes and is readily available in custom lengths, widths and densities with little to no impact on lead time.



CLASSIFICATION		TYPE I
Density, min, lb/ft3 (kg/m3)		.90 (15)
Thermal resistance of 1.00 in (25.4 mm) thickness, min F·ft ² h/Btu (K·m ² /W)		
@ 40°F (4.4°C)		4.00 (0.70)
@ 75°F (23.9°C)		3.60 (0.63)
Compressive resistance at 10% deformation or yield, whichever occurs first, min, psi (kPa)		10.0 (69)
Tensile strength, min, psi (kPa) (ASTM D1623)		15.0 (103)
Flexural strength, min psi (kPa)		25.0 (173)
Shear modulus, max, psi (kPa) (ASTM C273)		400 (2758)
Water Vapor permeance of 1.00 in (25.4 mm) thickness, max, perm (ng/Pa·s·m)		5.0 (287)
Water absorption by total immersion, max, volume %		4.0
Dimensional stability (change in dimensional), max, %		2.0
Oxygen index, min, volume %		24.0
Flame spread, max (ASTM E84)		25
Smoke developed, max (ASTM E84)		450
REQUIREMENTS		
Board Thickness, Class PB and PM	Maximum	4" (102 mm)
	Minimum	3/4" (19 mm)
Board width, max	Class PB	24" (610 mm)
	Class PM	24" (610 mm)
Board Length, max	Class PB	48" (1219 mm)
	Class PM	96" (2438 mm)